

# Caring for the East Credit *countryside*

Be a part of protecting the land you love

Credit Valley Conservation is offering site visits, workshops and funding for local landowners to preserve the health, viability and beauty of the East Credit countryside.

For more information, to book a site visit or attend a workshop contact Credit Valley Conservation at 1-800-668-5557 or visit [www.creditvalleyca.ca/eastcredit](http://www.creditvalleyca.ca/eastcredit).



# The East Credit Subwatershed

*The East Credit River flows through a special place, full of vitality and beauty. This picturesque area is home to many natural wonders. It is the meeting place of the Oak Ridges Moraine and Niagara Escarpment. The hills and valleys of the East Credit support thriving wetlands, a coldwater fishery, and productive farm lands.*

The first survey of the land surrounding the East Credit River was done in 1818, establishing a grid pattern of 100 acre lots grouped in 1,000 acre blocks, bordered by concessions and side roads that are still used today. Many communities emerged shortly after and some of these areas are still affectionately known by the names of these historical communities. **Kilmanagh** is one such place named by its first resident Hugh McTaggart after his birthplace in Ireland. This four-corner community once boasted a post office, church, blacksmith, cabinet shop, hotel and grocery store.

The **Hamlet of Silver Creek** grew up near the site of an early mill on the banks of Silver Creek, a stream that feeds into the East Credit River. A commercial fishery operated in this location in the early part of the 20th century. Cold, clear local streams and rivers continue to support healthy fish populations of Brook trout and Brown trout.

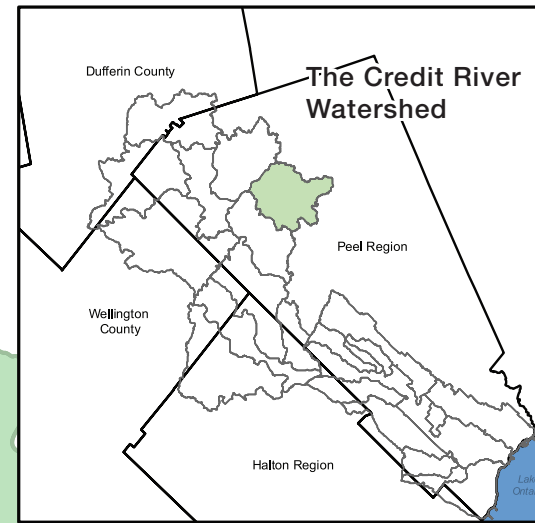
The rolling landscape supports thriving wetlands. The largest of these is **Little Credit Provincially Significant Wetland**. Wetlands act as sponges, buffering the countryside from extreme water events, releasing water during dry periods and soaking up water during periods of heavy rain. They also provide habitat for plants and animals.

The East Credit joins the main Credit River at **Ken Whillans Resource Management Area**, a designated fish sanctuary for populations of Brown, Brook and Rainbow trout. Two ponds also offer great fishing spots for Sunfish, Rock bass, Largemouth bass and Pike. Ken Whillans offers easy access to the **Caledon Trailway** a 36-kilometre long rail-trail that follows the path of an historic abandoned rail line that once linked Hamilton with Barrie.

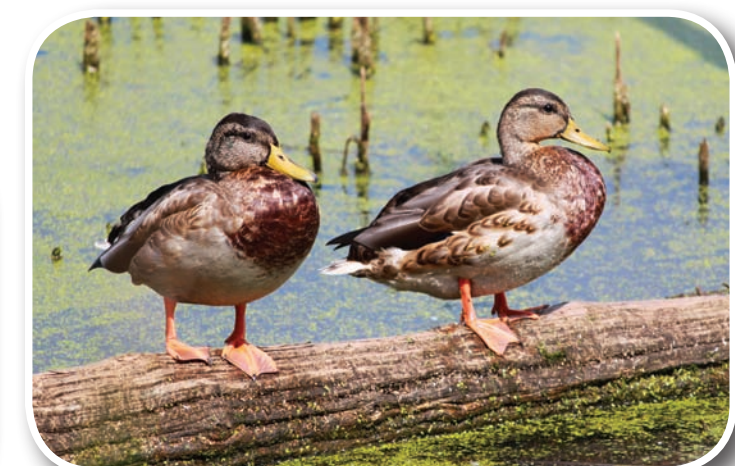
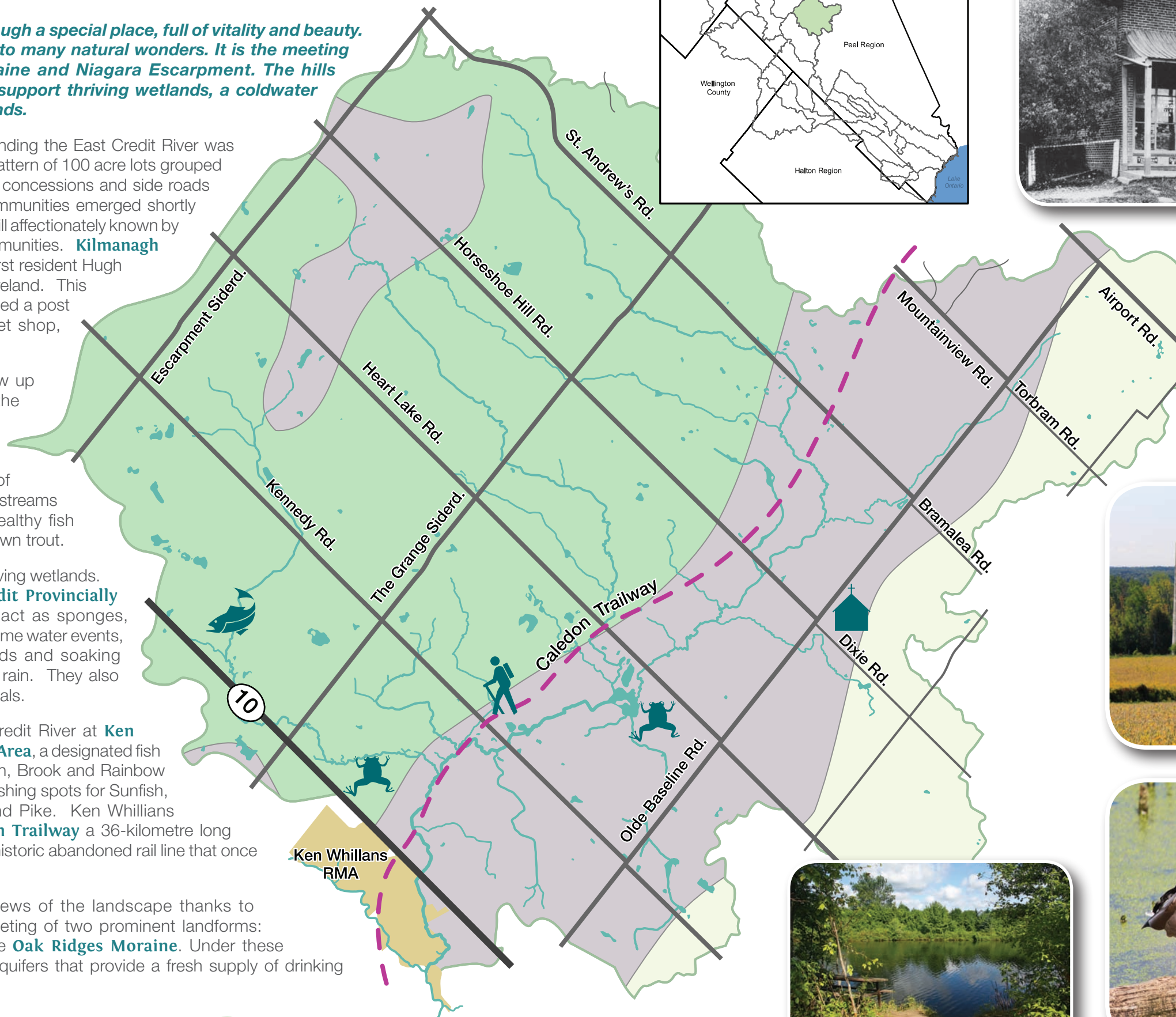
Hilltop vistas offer captivating views of the landscape thanks to the elevations created by the meeting of two prominent landforms: the **Niagara Escarpment** and the **Oak Ridges Moraine**. Under these geological formations you'll find aquifers that provide a fresh supply of drinking water for local wells.

Niagara Escarpment

Oak Ridges Moraine



Credit: RoPA, Wm. Perkins Bull Collection





## Be a part of protecting the land you love

*The East Credit is a working landscape and farming has been a vital part of the community for generations. Caring for the land and water continues to be part of that heritage and a new generation of farmers and residents are adopting best management practices on their properties.*

By partnering with CVC, you will receive help from experienced staff, information about funding programs to reduce costs, and technical assistance with projects on your property. Here's what you can do to help the East Credit:

- Monitor your woodlot for invaders. Our mature, healthy forests are under attack from disease and invasive plants and pests.
- Retro-fit your on-line pond to improve water quality, reduce pollution and help fish and wildlife move more naturally.
- Plant native trees, shrubs and wildflowers near wetlands and streams to help stop erosion and pollution.

Contact one of our Stewardship Coordinators today and be a part of protecting the East Credit countryside. We would love to hear from you.



## CONTACT US

For more information or assistance contact:  
1-800-668-5557

### Farm Properties

Mark Eastman,  
Agricultural Extension, ext. 430

### Other Properties

Alison Qua-Enoo,  
Escarpment Outreach, ext. 438

## LANDOWNERS CARING FOR THEIR LAND

At **Trailwood Farms** the Hart family have committed to Caring for the East Credit and protecting their own water quality by planting trees, fencing off a buffer between their pasture and wetlands, and properly sealing old wells on the property.



Improved recreational opportunities, wildlife viewing and scenery are some of the many reasons landowners are restoring natural areas on their property. At the **Scott Mission Camp** "The Pine Forest" is a reforestation project that began more than 40 years ago and is now a favourite spot enjoyed by visiting campers and staff. With help from CVC the organization recently planted another 9,000 trees on the property.



*Trees planted at Scott Mission Camp to buffer their pond from pollution.*