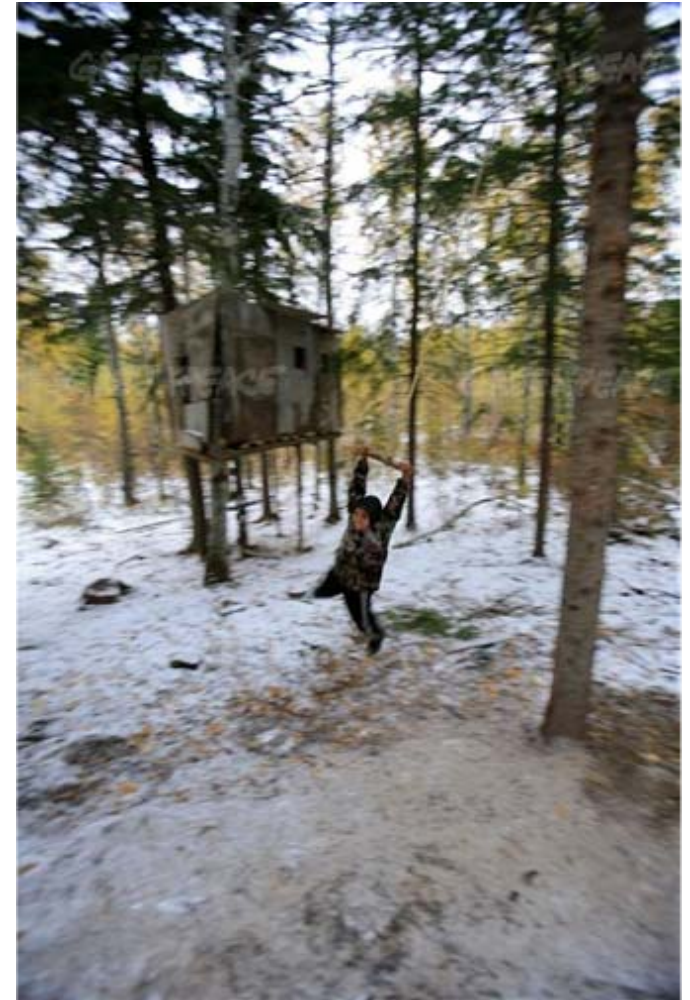


GREENPEACE

The Boreal Forest



- Introduction to the Boreal Forest
- Why the Boreal is important
- Threats to the Boreal Forest
- Woodland Caribou
- Solutions
- The Boreal Forest in Ontario
- How you can help!
- Questions?



GREENPEACE

PROTECT ANCIENT FORESTS

Greenpeace is committed to protecting the world's remaining ancient forests and the plants and animals (including people!) that depend on them.



GREENPEACE

Canada's Intact Boreal Forest Landscapes



Why is the Boreal Forest so important?



- Ancient and Intact
- Biodiversity
- Climate Change
- Ecosystem Services
- Many People's Livelihoods Depend on the Boreal Forest



Boreal Biodiversity



- The Boreal is home to many species
- Between 1.65 and 3 billion birds breed in the Boreal Forest
- Nearly half North America's birds depend on the Boreal Forest at some point in the year
- Home for caribou, wolves, bear, marten, wolverines, moose, and more





- The Boreal fights climate change by absorbing and sequestering carbon
- It stores 186-208 billion tons of carbon, at least 27 years worth of emissions from burning fossil fuels worldwide!



GREENPEACE

Turning up the Heat video:

<http://www.youtube.com/watch?v=wBYmB0gAgK4>



GREENPEACE

Ecosystem Services



- Water purification
- Air purification
- Carbon sequestration
- Canada's Boreal's ecosystem services have been valued at \$700 billion/yr!



- The Boreal Forest is a source of livelihood for forest communities

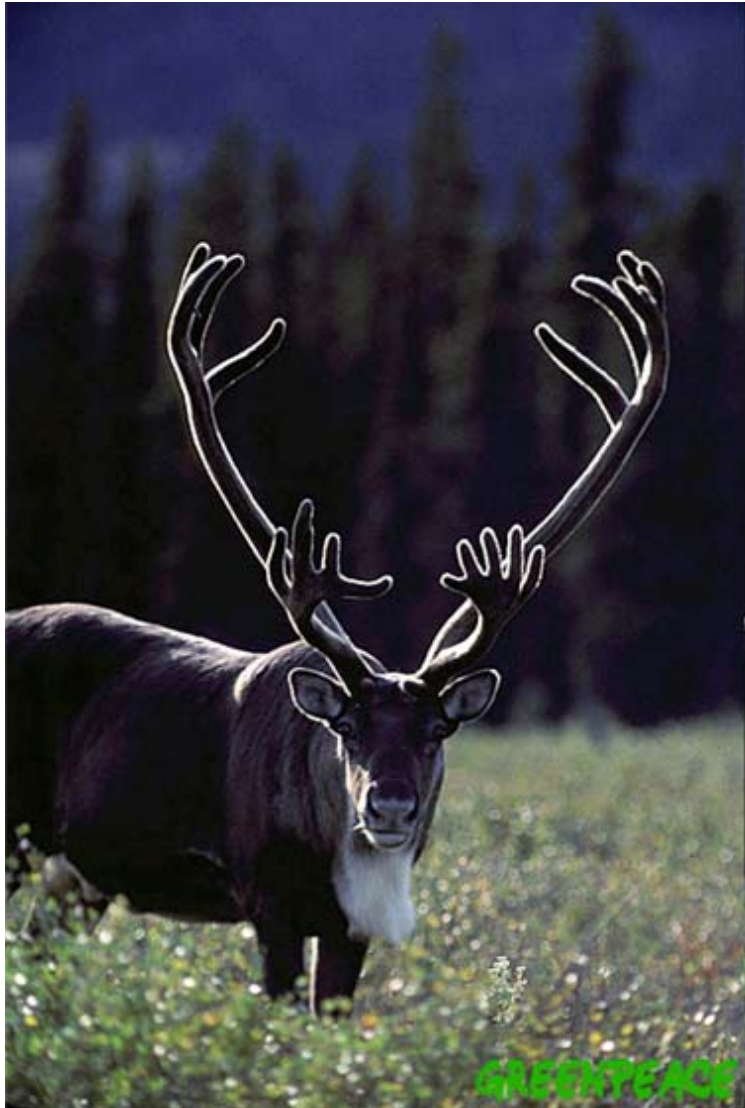


Threats to the Boreal

- Logging
- Road Building
- Mining
- Climate Change
- Industrial Development
- Generally
- Overconsumption



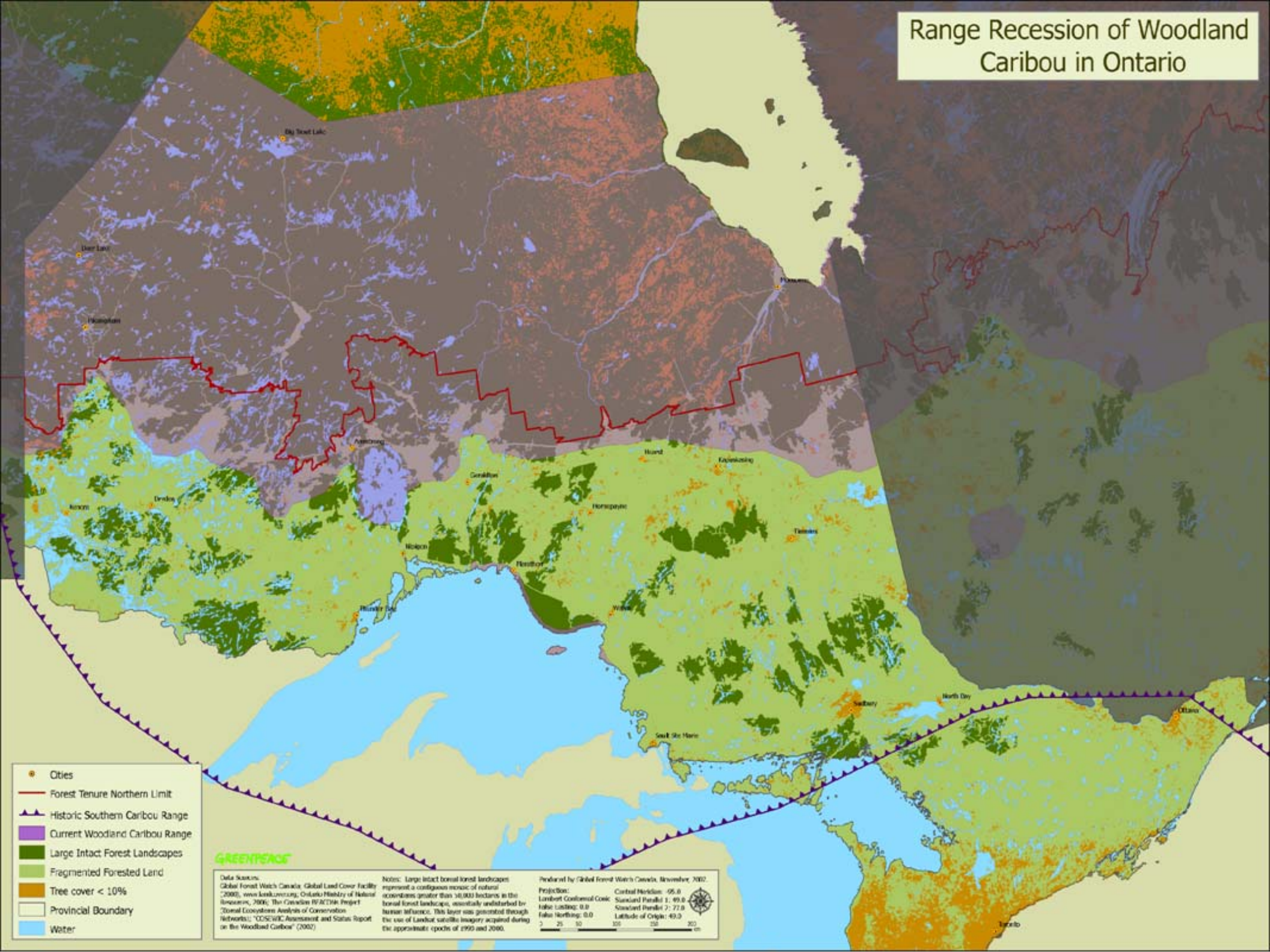
Woodland caribou



- Live in the Boreal Forest
- Iconic species; on the quarter!
- Threatened throughout Canada
- Woodland caribou have already lost half of their range in Ontario



Range Recession of Woodland Caribou in Ontario



- Cities
- Forest Tenure Northern Limit
- Historic Southern Caribou Range
- Current Woodland Caribou Range
- Large Intact Forest Landscapes
- Fragmented Forested Land
- Tree cover < 10%
- Provincial Boundary
- Water

GREENSPACE

Data Sources:
 Global Forest Watch Canada: Global Land Cover Facility (2000), www.landcover.org; Ontario Ministry of Natural Resources, 2000; The Canadian REACTIM Project; Zonal Ecosystems Analysis of Conservation Networks; COSEWIC Assessment and Status Report on the Woodland Caribou (2002)

Notes: Large intact boreal forest landscapes represent a contiguous mosaic of natural ecosystems greater than 30,000 hectares in the boreal forest landscapes, essentially undisturbed by human influence. This layer was generated through the use of Landsat satellite imagery acquired during the approximate epochs of 1990 and 2000.

Produced by Global Forest Watch Canada, November, 2002.
 Projection: Central Meridian: -95.0
 Lambert Conformal Conic Standard Parallel 1: 49.0
 False Easting: 0.0 Standard Parallel 2: 77.0
 False Northing: 0.0 Latitude of Origin: 49.0



GREENPEACE

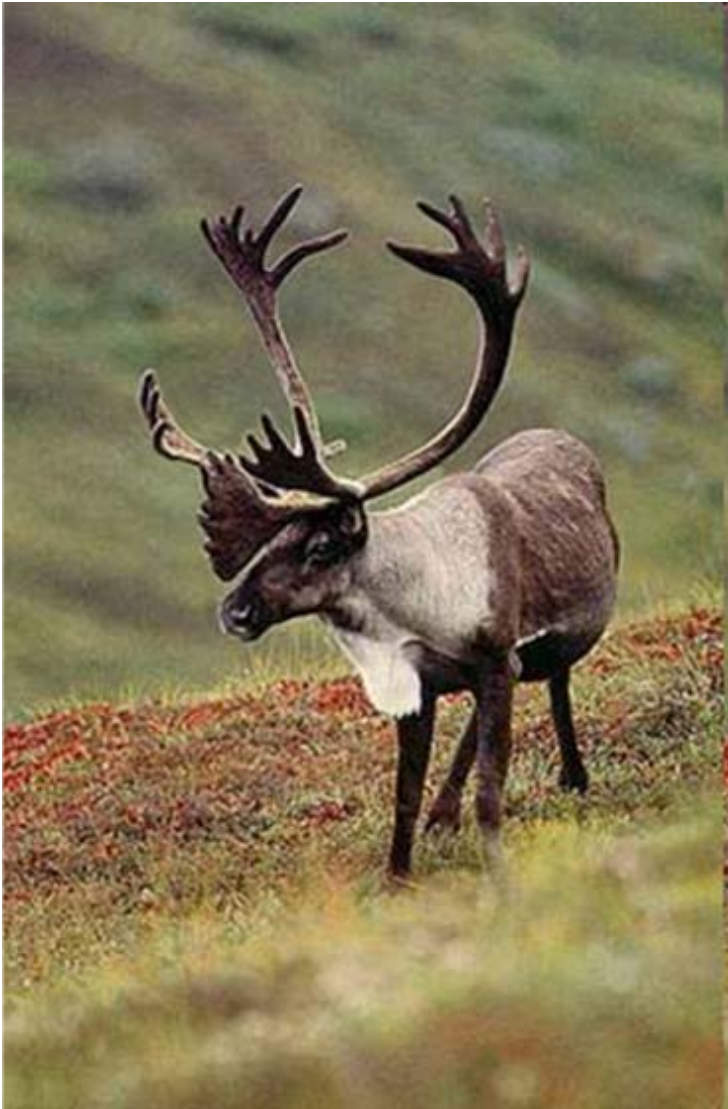
Indicator Species



- Woodland caribou are an indicator of overall forest health



Umbrella Species



- Protecting caribou means protecting the whole Boreal Forest
- Protecting caribou helps fight climate change
- This is why we focus on caribou protection



GREENPEACE

Solutions



- Manage where we log
- Manage how we log
- Canadian Boreal Forest Agreement (CBFA)
- Consume with respect for biophysical limits



GREENPEACE

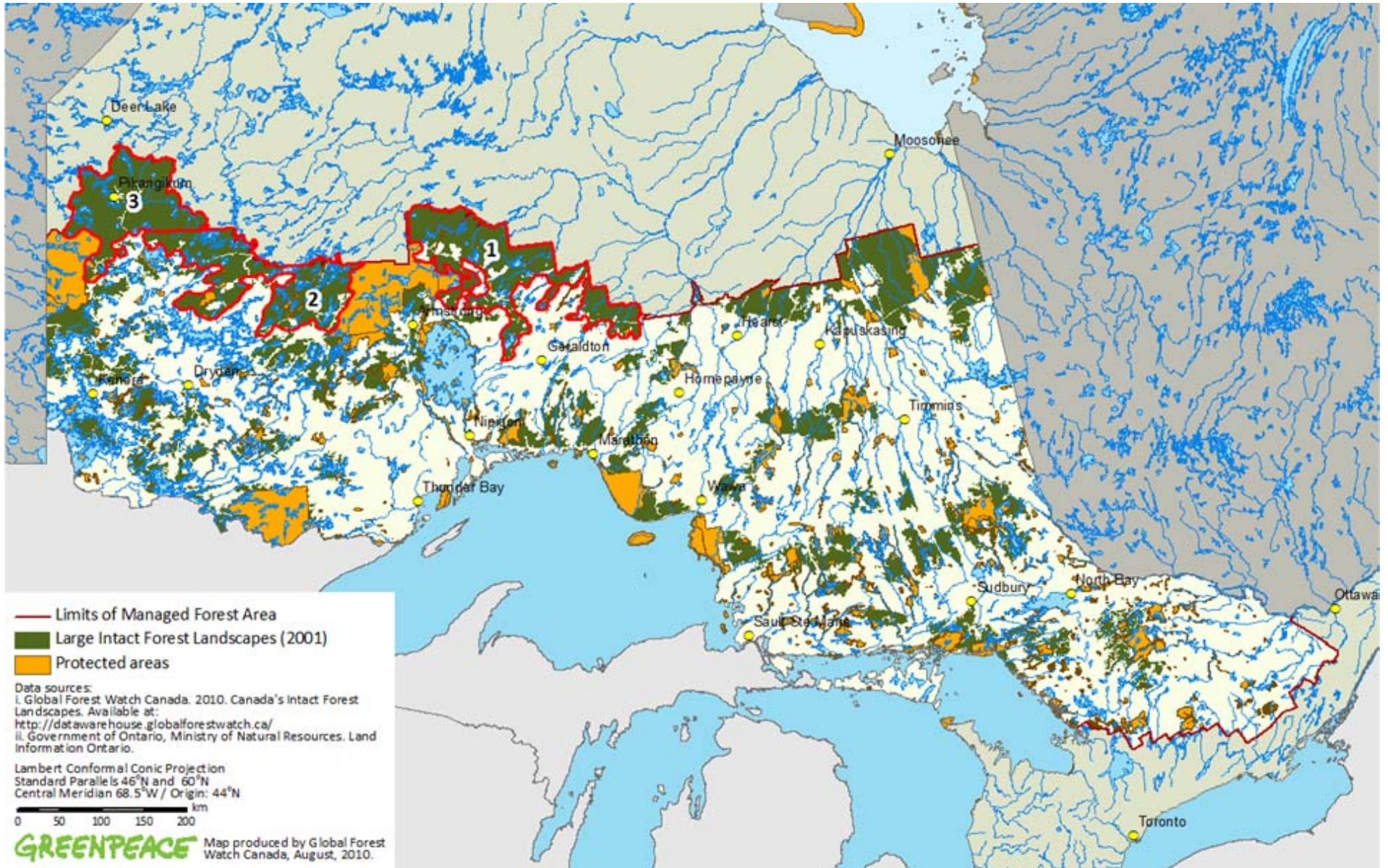
Where We Log



- We need a network of protected areas to preserve biodiversity
- Must protect conservation hotspots



Trout Lake-Caribou Forest and Ogoki-Kenogami Hotspots



GREENPEACE

How We Log



- Forest Stewardship Council (FSC) certification
- Ecosystem-Based Management (EBM)





Canadian Boreal Forest Agreement

Goal 1 – Implement EBM

Goal 2 – Establish a network of protected areas

Goal 3 – Recovery plans for species at risk (e.g. caribou)

Goal 4 – R&D for Climate Friendly Forest Products

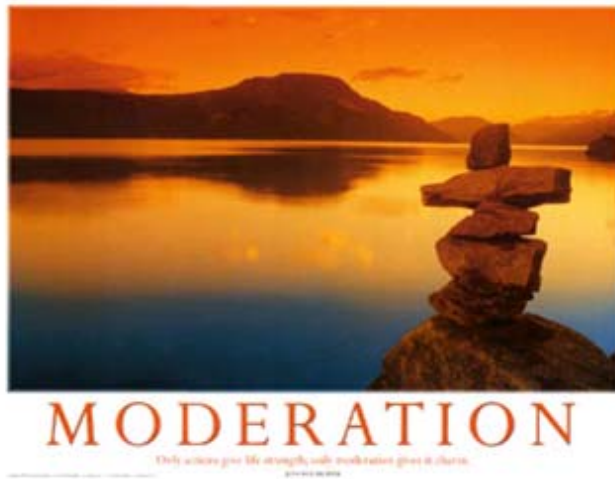
Goal 5 – Improve Canadian forest sector

Goal 6 – Promote Canadian forest sector as a leader in sustainability



GREENPEACE

Moderate Consumption



- Individually AND collectively
- Must consume sustainably within biophysical limits



GREENPEACE

WE NEED YOUR HELP!



- Sign up for e-mails at www.greenpeace.ca
- Sign our petition at www.greenpeace.ca/caribou
- Make your life greener
- Spread the word
- **Take your own initiative!**

I have materials and resources to help; come talk to me afterwards!



GREENPEACE

