

Class Environmental Assessment for the Belfountain Dam and Headpond

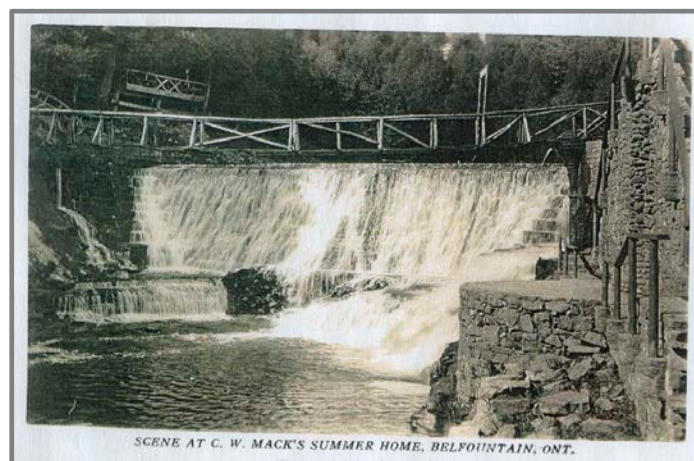
Belfountain Conservation Area

Background

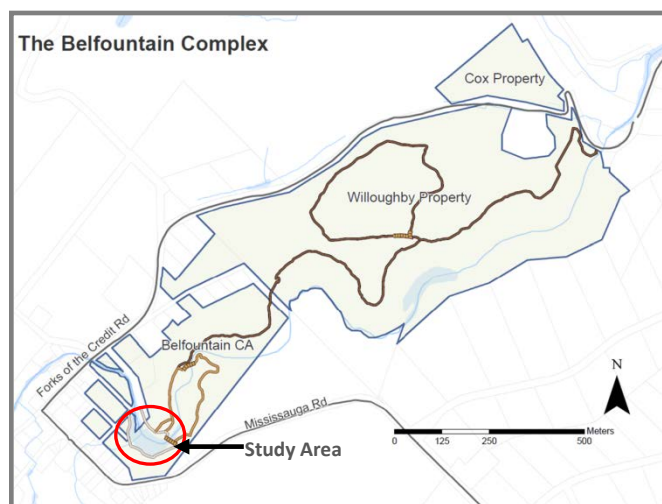
Located within the Town of Caledon, near the Hamlet of Belfountain, Belfountain Conservation Area is one of Credit Valley Conservation’s (CVC) oldest and most iconic properties. In the spring of 2015, CVC commenced a study regarding the dam and headpond located within the conservation area. The need for the study was identified in previous assessments of the dam which revealed various structural and environmental issues and concluded that the dam does not meet all of the current provincial standards for dam safety. The Class Environmental Assessment (Class EA) will be carried out concurrently with the ongoing Belfountain Complex Management Plan which is evaluating a larger study area including Belfountain Conservation Area, the Willoughby Property and Cox Property.

The purpose of this study will be to determine the preferred management alternative for the Belfountain dam and headpond in the context of the greater Belfountain Complex.

a local entrepreneur, Charles Mack, permitted public access to the property. The dam itself was re-constructed by Mack to resemble Niagara Falls. The resulting pond was used for boating, swimming and general enjoyment by the public. The dam, headpond, a fabricated ‘Yellowstone Cave’ and original stonework are still enjoyed by visitors today.



Belfountain Dam with Original Bridge



Belfountain Complex Map

History

The Belfountain dam and headpond are significant features within Belfountain Conservation Area. While Belfountain Conservation Area was purchased by CVC in 1959, it first opened as ‘Mack’s Park’ in 1914, when

Study Process

An environmental assessment is a study and planning process that evaluates the positive and negative impacts of a project before decisions are made about implementation. The Belfountain Dam and Headpond Class EA is being undertaken in accordance with Conservation Ontario’s procedures.



The Class EA process will include:

- consultation with public and agency partners;
- characterization of the study area;
- evaluation of preliminary alternatives;
- determination of the potential impacts of the proposed alternative, and;
- identification of measures and actions to mitigate negative impacts



Brook Trout (credit: Jon Clayton)

Project Objectives

The goal of the Class EA for the Belfountain dam and headpond is determine a solution that will address the problem of a potentially unsafe structure while aligning with CVC's objectives for the area:

- Minimize risk to visitors, staff and downstream properties
- Conserve and enhance cultural heritage values
- Conserve and enhance natural heritage values
- Maintain a barrier between sensitive, upstream Brook Trout populations and downstream species
- Promote natural stream function
- Maintain or improve visitor experience

CVC is in the early stages of the Class EA process, and potential solutions and alternatives have not yet been determined.

How to get Involved

CVC invites you to participate in this study. Comments and information regarding the study are being collected to assist CVC in meeting the requirements of the Class EA process. If you wish to be involved in this study, provide comments, ask questions, or receive information, please contact one of the project representatives, below.

Credit Valley Conservation

Laura Rundle
1255 Old Derry Road Mississauga, ON L5N 6R4
Tel: (905) 670-1615 ext.535
Email: lrundle@creditvalleyca.ca

Amec Foster Wheeler Environment and Infrastructure

Ron Scheckenberger, M.Eng., P.Eng.
3215 North Service Road, P.O. Box 220,
Burlington ON L7N 3G2
Tel: (905) 335-2353
Email: ron.scheckenberger@amecfw.com



Additional information on the project, as well as additional consultation opportunities will be advertised and made available on CVC's website: <http://www.creditvalleyca.ca>